



2018 CHELSEA YACHT CLUB OPEN REGATTA SAILING INSTRUCTIONS

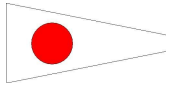
1. **RULES:** All races will be governed by the rules as defined in The Racing Rules of Sailing 2017 – 2020 published by the United States Sailing Association, and by the HRYRA Fleets 2018 Common Sailing Instructions, all as modified by these instructions. Changes in these instructions, and other official notices, will be posted on the Boathouse Bulletin Board. Notices posted at least one hour before the start of the affected event shall be deemed notification to all participants.
2. **PHRF Certificates:** The PHRF Certificate requirement of Section 1.3 of the HRYRA Fleets 2018 Common Sailing Instructions does not apply to any one-design fleet.
3. **VHF RADIOS:** Each boat shall monitor VHF channel 72 for Race Committee Notifications. Errors in VHF transmissions shall be disregarded.
4. **STARTING AND FINISHING:** Racing will take place both days north of the Newburgh Beacon Bridge in the racing area in front of the CYC mooring Field. The Start/Finish line is between the pole flying the Race Committee flag on the Race Committee Boat and a small yellow tetrahedron (**see race course details**). This yellow tetrahedron may be a mark of the course ("Mark Y")
5. **MOORING AREAS RESTRICTION:** Boats shall not sail or pass on the shore side of moorings or anchored or moored boats in a mooring area. A boat which sails or passes on the shore side of such moorings or boats shall be disqualified. The entire CYC mooring area beginning with the first anchored boat or mooring North of CYC Lighted Buoy (W) and continuing to the last anchored boat or mooring South of CYC Lighted Buoy (N) shall rank as a continuing obstruction. Mooring areas and boats and moorings in mooring areas shall not rank as a mark of the course. When not used as a mark of the course, Chelsea lighted buoys are obstructions that may be passed on either side. Contact with empty moorings, and fending off anchored or moored boats with any part of the body is permitted without penalty. A boat which collides (boat to boat contact) with a boat anchored or moored in a mooring area shall be disqualified, unless she alleges that she was wrongfully forced by another boat to make contact with the anchored or moored boat and unless she protests that other boat.
6. **SIGNALS:** All race signals will be flown from the Race Committee Boat in accordance with The Racing Rules of Sailing except:
 - Code Flag "N" will mean that all races are abandoned.
 - Code Flag "S" will be flown **ONLY AFTER** the start.
 - If flown from the Race Committee boat at the start/finish line, Code Flag "S" will mean: Sail the short course (the portion of the course before the hyphen in the course description and finishing at the start/finish line.)
 - If flown at a nearby rounding mark, it will mean: Finish between the nearby mark and this flag.
 - When code flag "AP" is displayed ashore, '1 minute' is replaced with 'not less than 30 minutes' in the race signal AP. Code flag "AP" shall be flown from the Chelsea Yacht Club Flagstaff.
 - **CHELSEA YACHT CLUB DOES NOT USE "AP OVER A", "AP OVER H", "N OVER A", OR "N OVER H". CODE FLAGS "A" AND "H" MAY BE USED AS CLASS FLAGS.**
 - **This rule modifies Rule 32.2 and HRYRA Instruction 14.**
7. **COMMERCIAL TRAFFIC:** Commercial traffic is often present in the race area. Boats are permitted to use ANY means of propulsion to avoid interference with commercial vessels in the race area. When a boat uses a means of propulsion that is normally prohibited to avoid interference with commercial traffic, that boat must return to the exact location where it began such use and come to a complete stop before continuing to race. Any boat that interferes with commercial traffic shall be disqualified.
8. **PENALTIES:** Section 13 of the HRYRA Cruising Fleets 2018 Common Sailing Instructions does not apply to any one-design fleet.
9. **PIPELINE BUOYS:** Note that there are five lighted buoys in the course area marking a submerged pipeline near CYC Mark W. These buoys are improperly marked in the NOAA charts as three lighted buoys. CYC Mark W is just north of this line of five lighted buoys. Parts of this pipeline have been observed floating between the eastern four buoys and it may not be safe to pass on the shore side of these buoys.



2018 CHELSEA YACHT CLUB OPEN REGATTA SAILING INSTRUCTIONS

10. STARTING ORDER/CLASS FLAGS: The order in which classes start shall be HRYRA PHRF 1, HRYRA PHRF 2, HRYRA PHRF 3, HRYRA PHRF 4, Ensign Fleet.

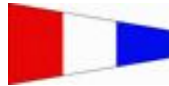
The class flags which serve as the warning signal for each class shall be as follows (flags for any additional classes will be posted on the Boathouse Bulletin Board):



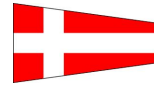
HRYRA PHRF 1
(Numeral Pennant 1)



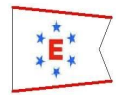
HRYRA PHRF 2
(Numeral Pennant 2)



HRYRA PHRF 3
(Numeral Pennant 3)



HRYRA PHRF 4
(Numeral Pennant 4)



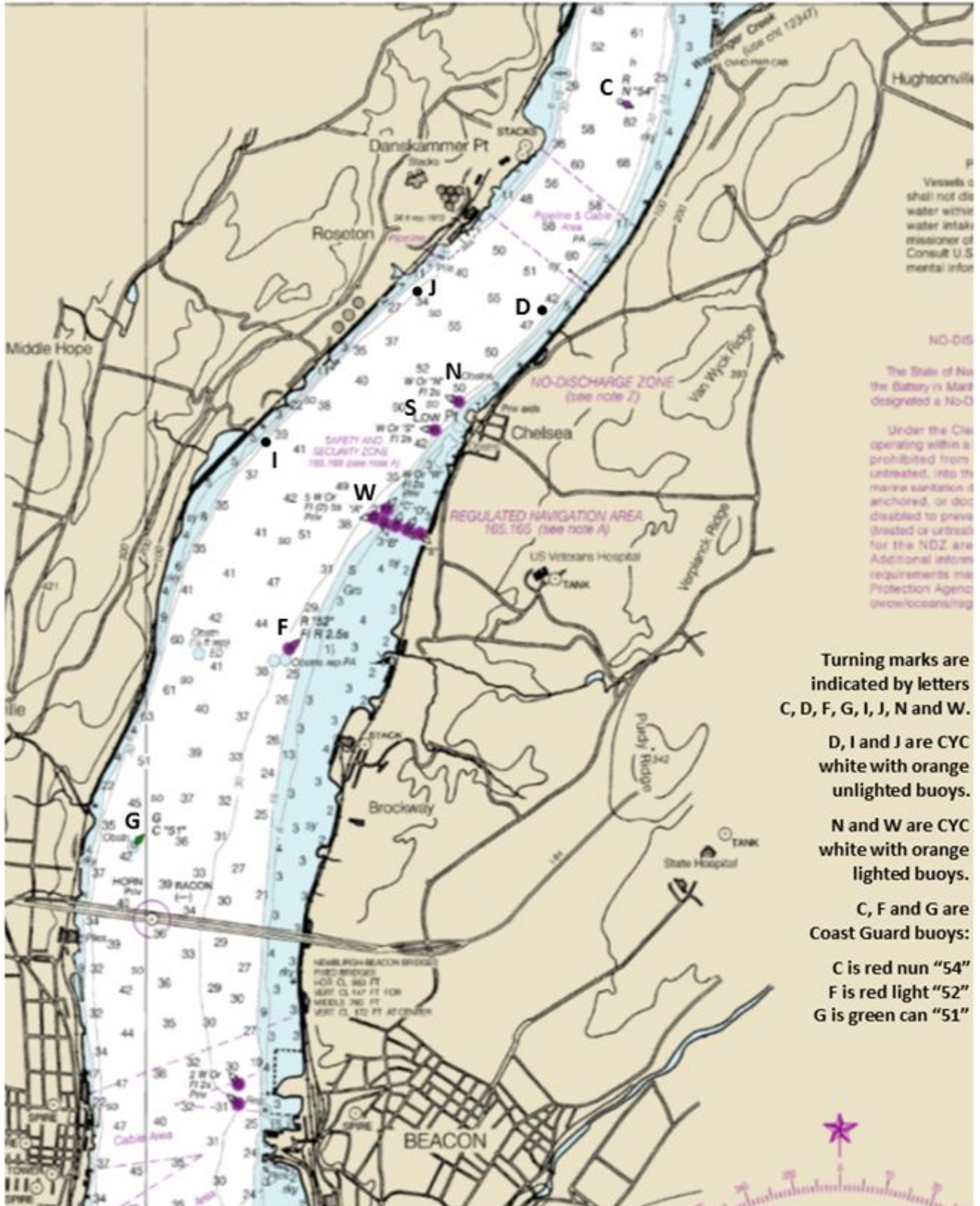
Ensign Class Flag

11. COURSES: Course numbers will be posted on the sides of the Race Committee Boat.

Courses	HRYRA PHRF 1, 2, 3	HRYRA PHRF 4 & Ensigns	Marks To
1	DW-DW	DW-DW	P
2	DIF	DIW	P
3	DIF-DF	DIF-DW	P
4	DIF-DIF	DIW-DIW	P
5	DIG-DIF	DIF-DIW	P
6	DJF	DJW	P
7	DJF-DF	DJW-DW	P
8	DJF-DJF	DJW-DJW	P
9	CIF-DIF	CIF-DW	P
10	WD-WD	WD	P
11	FID	WID	S
12	FD-FD	WD-WD	P
13	FID-FD	WID-WD	S
14	FID-FID	FID-WD	S
15	GID-FD	FID-FD	S
16	GID-FID	FID-WID	S
17	JDF-DF	JDW-DW	S
18	JDF-JDF	JDW-JDW	S
19	JDG-JDF	JDG	S
20	FIDW	WIDW	S
21	DIFD	DIWD	P
22	FCF	FDW	P



2018 CHELSEA YACHT CLUB OPEN REGATTA SAILING INSTRUCTIONS



Vessels shall not discharge water within water intake mission of Consult U.S. mental info

NO-DIS

The State of New York has designated a No-D

Under the Clean Water Act, vessels operating within a No-D zone are prohibited from discharging untreated, into the marine environment. Additional information requirements are available at www.oceans.gov

Turning marks are indicated by letters C, D, F, G, I, J, N and W.

D, I and J are CYC white with orange unlighted buoys.

N and W are CYC white with orange lighted buoys.

C, F and G are Coast Guard buoys:

C is red nun "54"
F is red light "52"
G is green can "51"