

2022 CHELSEA OPEN SAILING INSTRUCTIONS

Page 1 of 5

1. **RULES:** All races will be governed by the rules as defined in The Racing Rules of Sailing 2021–2024 published by the United States Sailing Association, and by the "HRYRA Cruising Fleets 2022 Common Sailing Instructions"(CSI), all as modified by these instructions. Changes in these instructions, and other official notices, will be posted on the Boathouse Bulletin Board. Notices posted at least one hour before the start of the affected event shall be deemed notification to all participants.
2. **PHRF Certificates:** The PHRF Certificate requirement of Section 1.3 of the HRYRA Fleets 2022 Common Sailing Instructions does not apply to a one-design fleet.
3. **VHF RADIOS:** Each boat shall monitor VHF channel 72 for **Race Committee Notifications**. Errors in VHF transmissions shall be disregarded.
 - a. The Chelsea launch monitors VHF channel 68.
4. **STARTING AND FINISHING:** Racing will take place both days north of the Newburgh Beacon Bridge in the racing area in front of the CYC mooring Field. The Start/Finish line is between the pole flying an Orange / Blue Flag on the Race Committee Boat and a small yellow tetrahedron (**see race course details**).
 - a. Boats whose warning signal has not been made shall avoid the starting area during the starting sequence for other races.
 - b. If any part of a boat's hull is on the course side of the starting line at her starting signal and she is identified, the race committee will attempt to hail her sail number, Failure to hail her number, failure to hear such a hail, or the order in which boats are hailed shall not be grounds for redress. This changes RRS 62.1(a)
5. **THE COURSES**
 - a. The courses are described in Attachment A.
 - b. The course shall be designated by a black-on-white number posted to both sides of the Race Committee signal boat.
6. **MARKS**
 - a. Attachment B illustrates the location and describes the marks of the course corresponding to Attachment A.
 - b. The starting and finishing marks shall be the race committee signal boat to the east and a nearby floating mark designated as Mark "Y" to the west.
7. **OTHER SIGNALS:** All race signals will be flown from the Race Committee Boat in accordance with The Rules of Sailing except:
 - a. Code Flag "N" will mean that all races currently in progress are abandoned.
 - b. Code Flag "S" will be flown ONLY AFTER the start.
 - c. Code Flag "S" if flown at a nearby rounding mark, it will mean: Finish between the nearby mark and this flag.
 - d. If Code flag "AP" is flown from the Chelsea Yacht Club Flagstaff, It will be dropped one minute before the next warning signal.
 - e. When code flag "AP" is displayed from shore, 'It will be dropped no less than 30 minutes from the next warning sign.

**2022 CHELSEA OPEN
SAILING INSTRUCTIONS**

Page 2 of 5

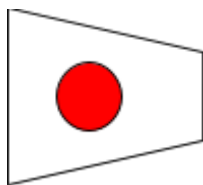
- f. **CHELSEA YACHT CLUB DOES NOT USE “AP OVER A”, “AP OVER H”, “N OVER A”, OR “N OVER H”. CODE FLAGS “A” AND “H” MAY BE USED AS CLASS FLAGS.**
 - g. **This rule modifies Rule 32 and HRYRA Instruction 5.3.**
8. **COMMERCIAL TRAFFIC:** Commercial traffic is often present in the race area. Boats are permitted to use ANY means of propulsion to avoid interference with commercial vessels in the race area. When a boat uses a means of propulsion that is normally prohibited to avoid interference with commercial traffic, that boat must return to the exact location where it began such use and come to a complete stop before continuing to race. Any boat that interferes with commercial traffic shall be disqualified.
9. **PIPELINE BUOYS:** Note that there are five lighted buoys in the course area marking a submerged pipeline near CYC Mark W. These buoys are improperly marked in the NOAA charts as three lighted buoys. CYC Mark W is just north of this line of five lighted buoys. Parts of this pipeline have been observed floating between the eastern four buoys and it may not be safe to pass on the shore side of these buoys.
10. **MOORING AREAS RESTRICTION:** Boats shall not sail or pass on the shore side of moorings or anchored or moored boats in a mooring area. A boat which sails or passes on the shore side of such moorings or boats shall be disqualified. The entire CYC mooring area beginning with the first anchored boat or mooring North of CYC Lighted Buoy (W) and continuing to the last anchored boat or mooring South of CYC Lighted Buoy (N) shall rank as a continuing obstruction. Mooring areas and boats and moorings in mooring areas shall not rank as a mark of the course. When not used as a mark of the course, Chelsea lighted buoys are obstructions that may be passed on either side. Contact with empty moorings, and fending off anchored or moored boats with any part of the body is permitted without penalty. A boat which collides (boat to boat contact) with a boat anchored or moored in a mooring area shall be disqualified, unless she alleges that she was wrongfully forced by another boat to make contact with the anchored or moored boat and unless she protests that other boat.
11. **PENALTIES:** Section 14 of the HRYRA 2021 Common Sailing Instructions does not apply to any one-design fleet. HRYRA Fleets refer to CSI 14 (RRS 44.3). One Design Fleet refer to RRS 44.1 and 44.2
12. **TIME Limits:** Refer to CSI 15
13. **Hearing Requests:** Refer to CSI 16
14. **Scoring:** Refer to CSI 17
15. **Safety:**
- a. Before each warning signal, each boat shall report her sail number to the race committee by oral hail. Hails on VHF do not satisfy this requirement.
 - b. A boat that retires from the race shall notify the race committee as soon as possible on VHF channel 72 or by oral hail.

**2022 CHELSEA OPEN
SAILING INSTRUCTIONS**

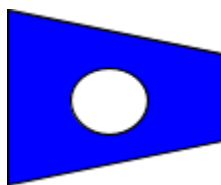
16. **RISK STATEMENT:** RRS 3 states: “ The Responsibility for a boat’s decision to participate in a race or to continue to race is theirs alone.” By participating in this event each competitor agrees and acknowledges that sailing is a potentially dangerous activity with inherent risks, including but not limited to, strong winds, rough seas, weather changes and the risk of permanent catastrophic injury or death by drowning, trauma, hypothermia or other causes.

17. **STARTING ORDER/CLASS FLAGS:** It is the intention of the RC to start the classes in following order: HRYRA PHRF 1, HRYRA PHRF 2, HRYRA PHRF 3, Ensign Fleet , CYC Open Fleet.
Any changes to that will be signaled from the committee boat.

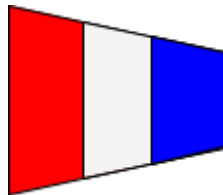
The class flags which serve as the warning signal for each class shall be as follows (flags for any additional classes will be posted on the Boat House Bulletin Board.



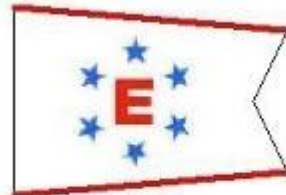
PHRF #1



PHRF #2



PHRF #3



ENSIGN OD

CLASS	PHRF VALUES	CLASS FLAG	STREAMER COLOR
1	< 130, WITH SPINNAKERS	CODE FLAG #1	BLUE
2	> 130 WITH SPINNAKERS	CODE FLAG #2	ORANGE
3	ALL WITHOUT SPINNAKERS	CODE FLAG #3	WHITE
OTHERS	ENSIGN OD	NONE	NONE

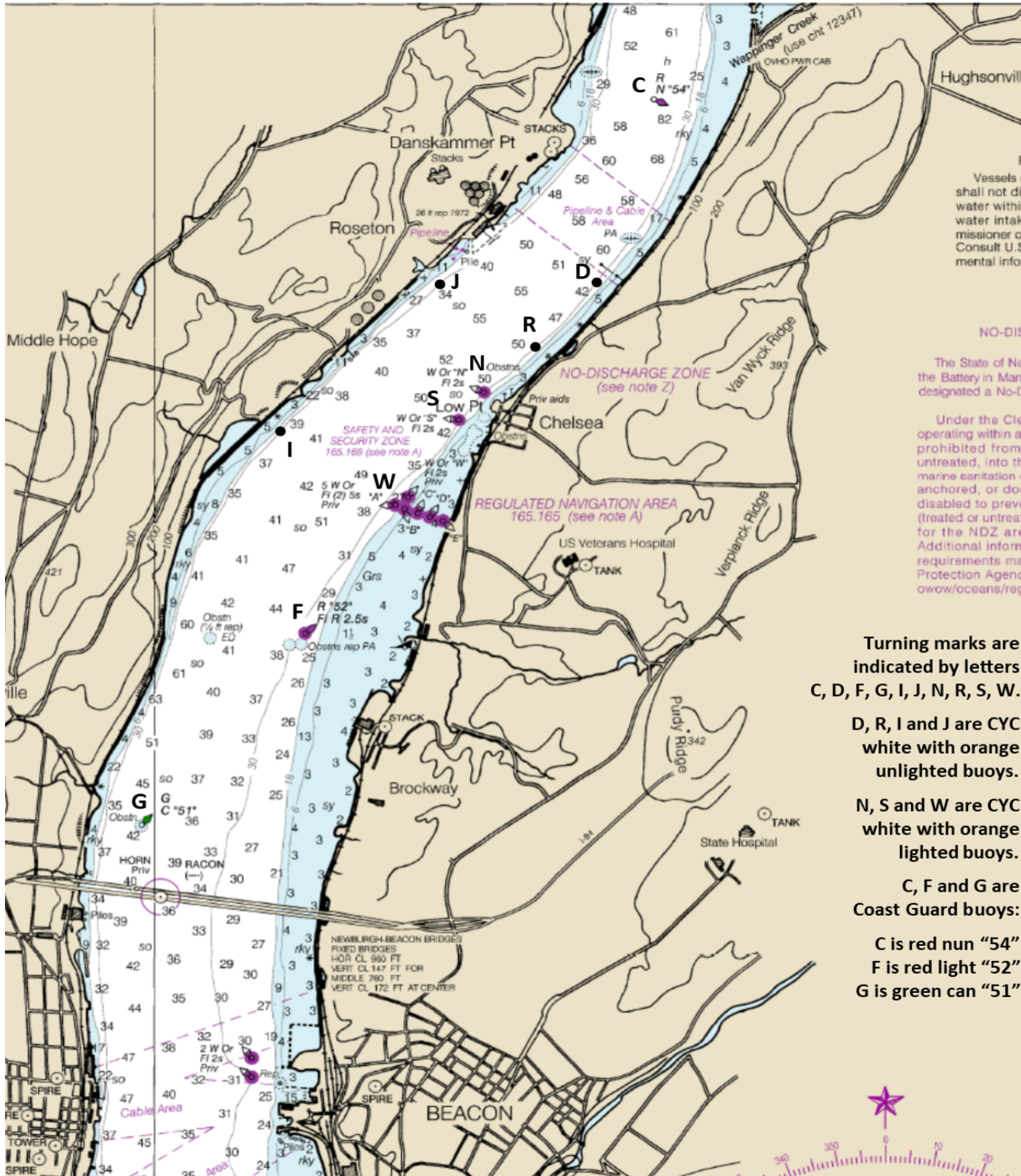
**2022 CHELSEA OPEN
SAILING INSTRUCTIONS**

Attachment A:

Course #	HRYRA FLEETS 1, 2	HRYRA FLEET 3 and Ensigns	Marks to
1	DW-DW	DW-RW	P
2	WD-WD	WD-WR	P
3	RW-RW	RW-NW	P
4	WR-WR	WR-WN	P
5	F	F	P
6	C	C	P
7	DIF	RIW	P
8	FID	WIR	S
9	DJF	DJW	P
10	FJD	WJD	S
11	FD	FR	P
12	DF	RF	P
13	JF-JF	JF-JW	P
14	FD-FD	FD-WD	P
15	DF-DF	DF-DW	P
16	FID-FD	WID-WD	S
17	DIF-DF	DIW-DW	P
18	FID-WR	WID-WR	S
19	JDF-JDF	JDF-JDW	S
20	FID-FID	FID-WD	S
21	DIF-DIF	DIF-DW	P
22	CW-CW	CW-DW	P
23	DIF-DW	DIW-DW	P
24	FC-WC	WD-WD	P
25	JDG-JDF	JDF-JDW	S
26	DIG-DIF	DIF-DIF	P
27	GID-FID	FID-FID	S

2022 CHELSEA OPEN SAILING INSTRUCTIONS

Attachment B:



Vessels shall not discharge water within water intake mission of Consult U.S. mental infor

NO-DIS
The State of New York has designated a No-Discharge Zone (NDZ) in the Chelsea area. Under the Clean Water Act, it is prohibited from discharging untreated, raw sewage into the water. Vessels operating within this zone are prohibited from discharging untreated sewage, even if the vessel is equipped with a pump-out station. Additional information regarding the NDZ is available at www.nys.gov/oceans/reg.

Turning marks are indicated by letters C, D, F, G, I, J, N, R, S, W.
D, R, I and J are CYC white with orange unlighted buoys.
N, S and W are CYC white with orange lighted buoys.
C, F and G are Coast Guard buoys:
C is red nun "54"
F is red light "52"
G is green can "51"